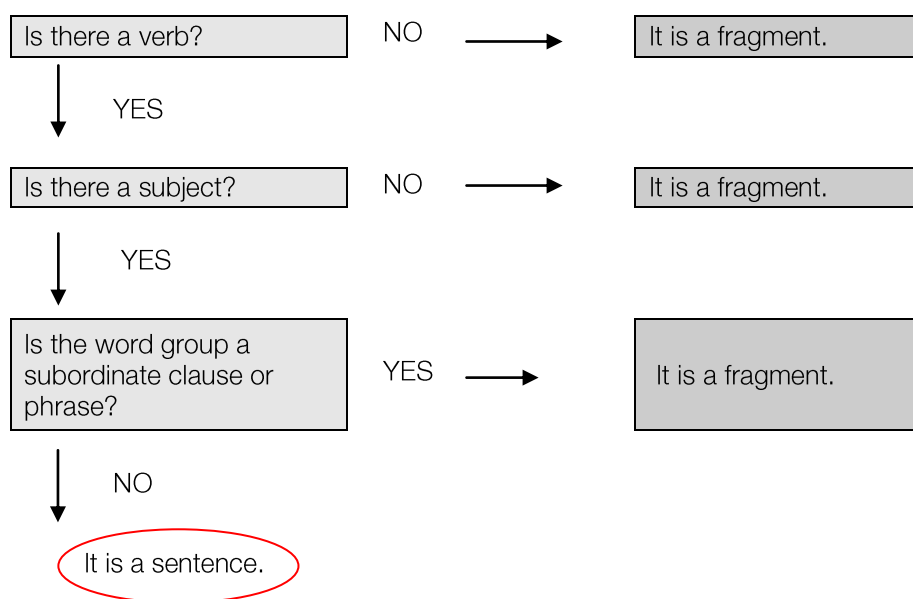


SENTENCE STRUCTURE: SENTENCE FRAGMENTS

Fragments are incomplete sentences. They are usually parts of sentences that have become disconnected from the main part of the sentence. Dependant clauses cannot stand alone as complete sentences.

The following flowchart can be used to test for sentence completeness.



Here are some examples of fragments. Notice how they sometimes begin with words such as *because* or *such* that make the fragment a dependent clause or are simply long phrases starting with a word like *which*.

Sentence fragment (fragments are in bold)	Revised sentence (other revisions are possible)
He has an exam next week. Which is why he is going to the library to find a quiet place to study.	He has an exam next week, which is why he is going to the library to find a quiet place to study.
The student was finding the article difficult to read. Because many of the ideas and concepts it contained were unfamiliar to her.	The student was finding the article difficult to read because many of the ideas and concepts it contained were unfamiliar to her.
Being an expert in the use of nanotechnology in medicine.	Being an expert in the use of nanotechnology in medicine, Mannering is an appropriate researcher for Tina to cite in her assignment.
An induction session was held about the work placements. So that students were adequately prepared for them.	An induction session was held so that students were adequately prepared for their work placements.